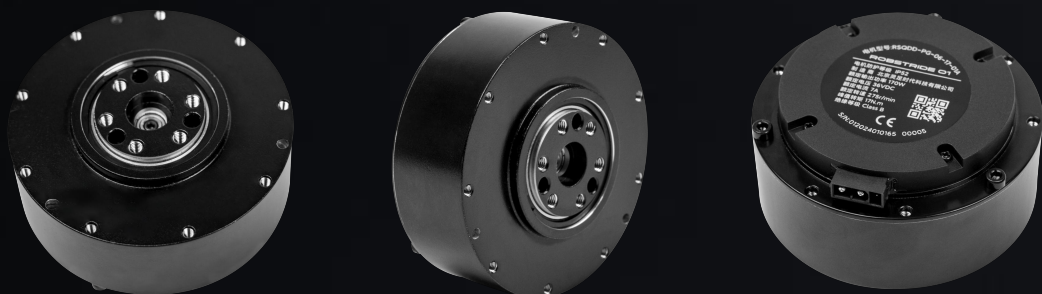
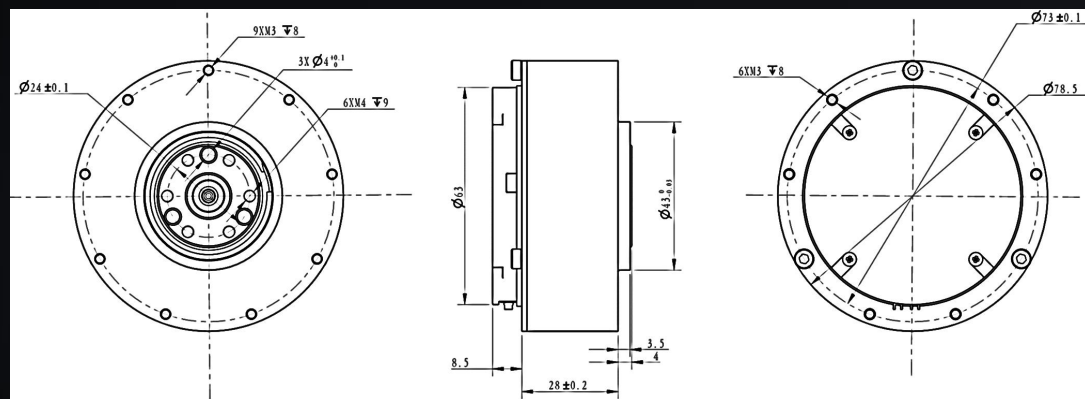


ROBSTRIDE 01 - ¥ 599

准直驱17N.m一体化电机模组
17N.m Integrated QDD Actuator



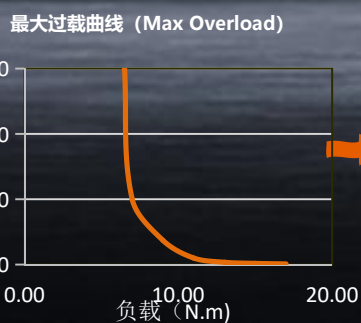
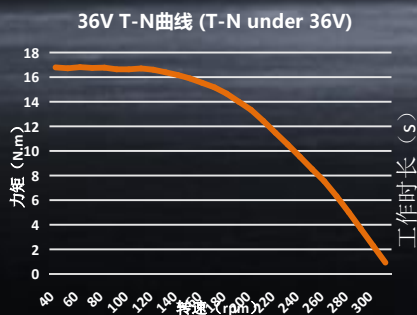
尺寸参数 Dimensions



机械参数 Mechanical Specs

科目 Item	参数 Spec
重量 Weight	380g \pm 3g
极数 Pole	28
相数 Phase	3
驱动方式 Drive Method	FOC
减速比 reduction ratio	7.75 : 1

性能曲线 Performance Curves



电气特性 Electrical Specs



科目 Item	参数 Spec
磁编码器 Magnetic Encoder	1 pc
额定电压 Rated Voltage	36V
使用电压范围 Voltage Range	24-48V
额定输出功率 Rated Output Power	60w \pm 10%
额定扭矩 Rated Torque	6N.m
峰值扭矩 Peak Torque	17N.m
运转方向 Running Direction	CW/CCW
使用温度范围 Temperature Range	-20~50°C
使用湿度范围 Humidity Range	5~85%
保存温度范围 Storage Temperature Range	-30~70°C
绝缘等级 Insulation Level	Class B
空载转速 No-load Speed	315 rpm \pm 10%
空载电流 No-load Current	0.5 Arms
额定负载转速 Rated Load Speed	275 rpm \pm 10%
额定负载相电流 Rated Load Phase Current	7Apk \pm 10%
峰值相电流 Peak Phase Current	23Apk \pm 10%
绝缘电阻/定子绕组 Insulation Resistance/ Stator Winding	DC 500VAC, 100M Ohms
耐高压/定子与机壳 High Voltage Resistance/ Stator and Casing	600VAC, 1s, 2mA
电机反电势 Back-EMF	0.096 Vrms/rpm \pm 10%
线电阻 Line Resistance	0.55Ω
转矩常数 Torque Constant	1.22 N.m/Arms
电机电感 Inductance	486 \pm 20%μH

负载 Load (N.m)	工作时间 Operating Time (s)
6	rated
6.5	3000
11	100
15	18
17	10